

COLLEGE DRIVE

G STREET

HUFF STREET

WEST HUFF STREET

"G" STREET VACATED

RANCHO

POB

BERNARDINO

W.B. 7/2

SALV

MILL STREET

POB

BERNARDINO

W.B. 7/2

AVENUE

STREET

MAP 856-36-86B PAR. NO. 3

WEST R/W RADIUS
 $R = 50'$
 $\Delta = 33^\circ 46' 43"$
 $L = 34.71'$

WEST R/W RADIUS
 $R = 48.96'$
 $\Delta = 32^\circ 46'$
 $L = 31.87'$

RADIUS
 $R = 150'$
 $\Delta = 65^\circ 59' 11"$
 $L = 97.48'$

EAST R/W RADIUS
 $R = 127'$
 $\Delta = 58^\circ 41' 30"$
 $L = 110.49'$

EAST R/W RADIUS
 $R = 50.00'$
 $\Delta = 140^\circ 13' 17"$
 $L = 68.94'$

RADIUS
 $R = 199'$
 $\Delta = 27^\circ 27' 08"$
 $L = 48.36'$

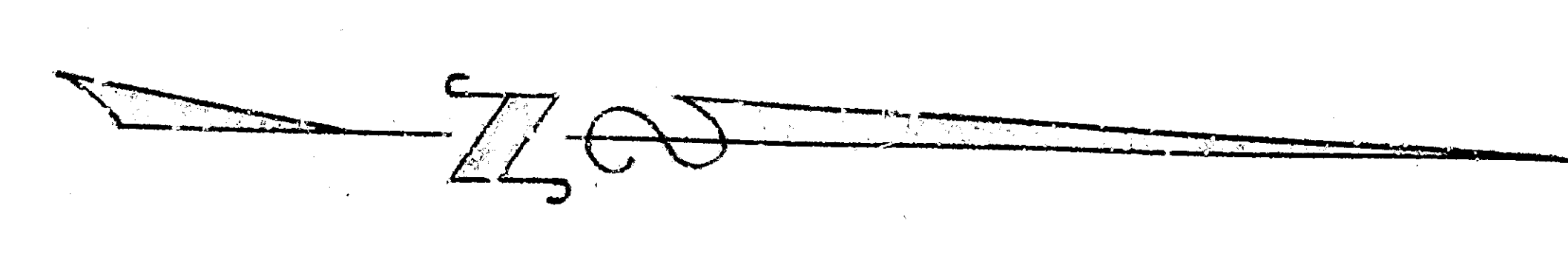
EAST R/W RADIUS
 $R = 42.27'$
 $\Delta = 39^\circ 53'$
 $L = 27.74'$

EAST R/W RADIUS
 $R = 118'$
 $\Delta = 89^\circ 48'$
 $L = 60.12'$

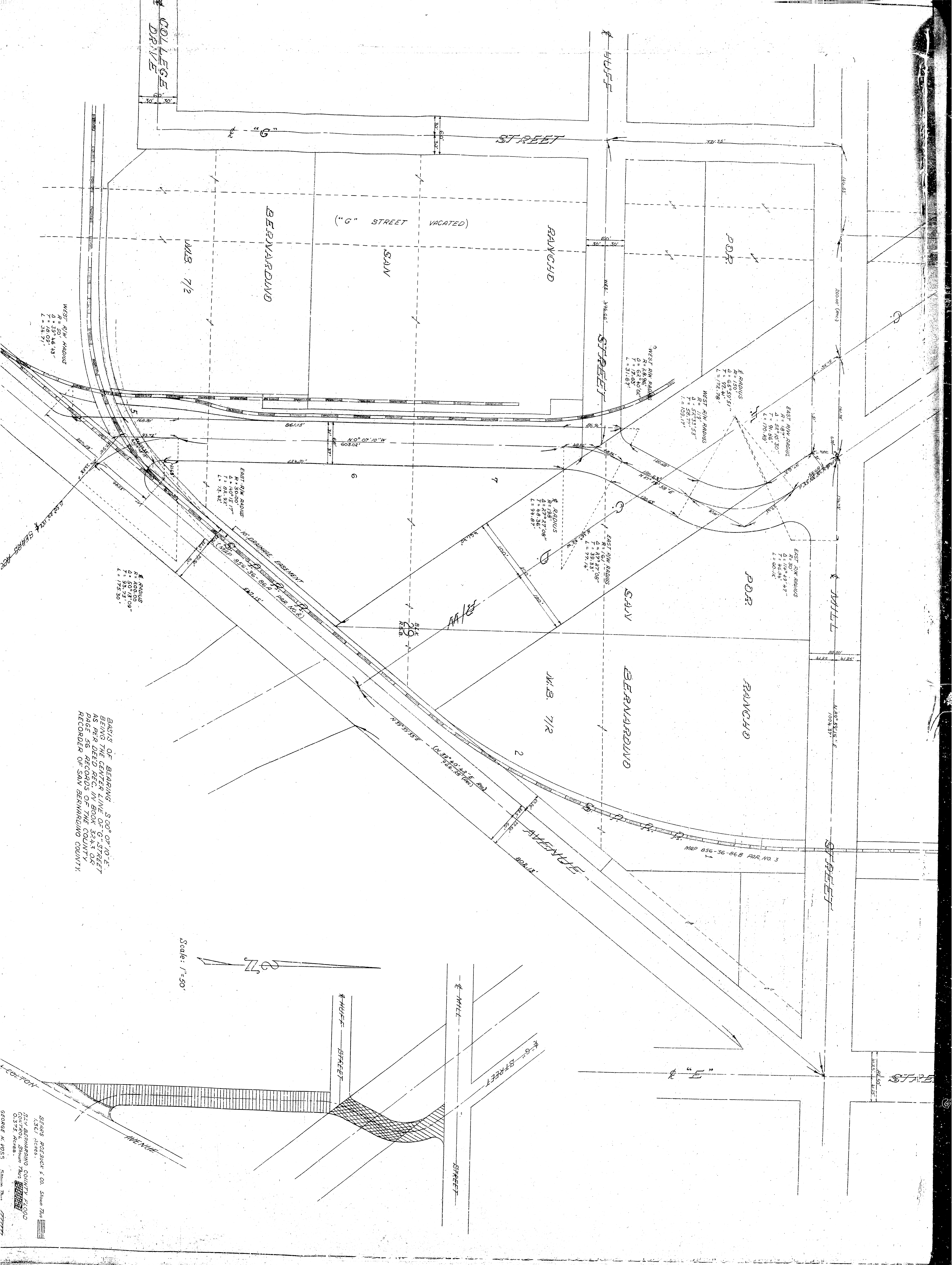
RADIUS
 $R = 50'$
 $\Delta = 50^\circ 17' 09"$
 $L = 175.30'$

BASIS OF BEARING $S 00^\circ 07' 10" E$
 BEING THE CENTER LINE OF "G" STREET
 AS PER DEED REC. IN BOOK 324, PAGE 56, RECORDS OF THE COUNTY RECORDER OF SAN BERNARDINO COUNTY.

Scale: 1" = 50'



SEARS ROEBUCK & CO. Station 744
 1351 1/2 Ave.
 521 W. BERNARDINO COUNTY FLOOD
 CONTROL DIST. Station 744
 03/21/1955
 GEORGE H. MOSS Station 744



COLLEGE DRIVE

HUFF STREET

"G" STREET VACATED

BERNARDINO

W.B. 7/2

RANCHO

POB

WEST R/W RADIUS

WEST R/W RADIUS

EAST R/W RADIUS

POB

EAST R/W RADIUS

BERNARDINO

W.B. 7/2

RANCHO

WILL STREET

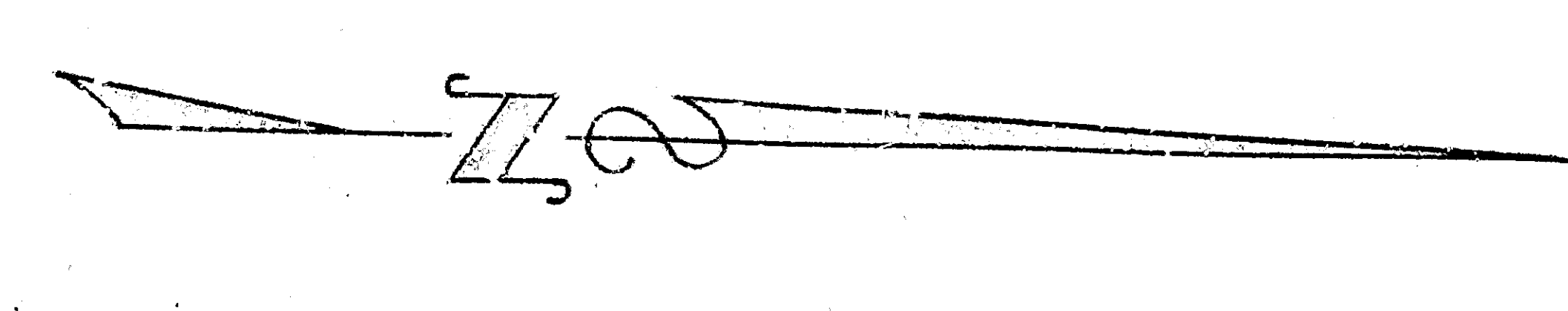
STREET

AVENUE

MAP 856-36-86 B PAR. NO. 3

BASIS OF BEARING S 00° 07' 10" E BEING THE CENTER LINE OF "G" STREET AS PER DEED REC. IN BOOK 324, PAGE 56, RECORDS OF THE COUNTY RECORDER OF SAN BERNARDINO COUNTY.

Scale: 1" = 50'



SEARS ROEBUCK & CO. Station 744
 1351 1/2 Ave.
 521 W. BERNARDINO COUNTY FLOOD CONTROL DIST. Station 744
 03/21/1968
 GEORGE H. MOSS Station 744